

The 27th Science in Japan Forum

Conquering All Diseases by Metaverse-based Research



Keynote Speech

Kohji Nishida

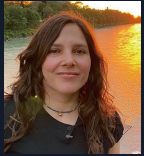
(Osaka University WPI-PRIME Director)



Session 1

Takanori Takebe

(Cincinnati Children's Hospital/Osaka University WPI-PRIME)



Session 2

Elisa Domínguez-Hüttinger

(Universidad Nacional Autónoma de México/Osaka University WPI-PRIME)



Session 3

Takahiro Nemoto

(Osaka University WPI-PRIME)



Session 4

Nozomu Yachie

(The University of British Columbia/Osaka University WPI-PRIME)



Moderator of the Panel Discussion

Kazuhiro Sakurada

(Osaka University WPI-PRIME/Keio University)

CELL

INDIVIDUAL

Thursday
June 13, 2024
1:00pm - 6:00pm (EDT)

Format: Hybrid (Onsite and Online)

Venue: Cosmos Club

(2121 Massachusetts Ave., NW, Washington, DC)

On-site participation is by invitation only.
Everyone is welcome to participate online.



JAPAN SOCIETY FOR THE PROMOTION OF SCIENCE

日本学術振興会



U.S. DEPARTMENT OF
ENERGY

Office of
Science

